

HEPL - University College of the Province of Liège

How about
a full year in English
in Industrial Engineering
in Chemistry
in the French speaking
part of Belgium ?





Province
de Liège

Haute École
de la Province de Liège



Province
de Liège

Haute École de la Province de Liège
Campus Seneffe, rue de l'Université



WELCOME

The HEPL University College has more than 9,000 students, and as such is the most important in the French-speaking Community.

Offering a wide range of trainings covering many different fields, our University College aims to offer its students the professional skills that allow them to enter the labour market directly. Thanks to the placements, seminars, visits, continuous education and research projects it develops, the HEPL is regularly in contact with professional partners.

Our teaching staff is fully committed to offering students high-quality education. The HEPL is today recognized as a competent partner, and as such is involved in the economic development of Liège, and more widely, of the whole Walloon region.

Located in the heart of Europe, our University College has been developing, for years now, different partnerships with foreign institutions, allowing it to be fully involved in the European Higher Education Area. Our students can therefore benefit from the whole Bologna Process.

Provincial Deputy
in charge of the Education Department

The HEPL University College offers, across many disciplines, a wide range of short courses (more than 30 Bachelor's level courses) or long courses (7 Master's level courses).

Whatever the field of study, our institution offers training that combines theoretical aspects and practical experience through internships in the workplace and numerous meetings with representatives of the socio-economic sectors. The HEPL has the ambition to immediately project its students into the real framework of their professional future and to provide them, from the first year of study, with effective tools to achieve this, by giving them both transversal skills and advanced skills in their discipline.

While remaining a «school in the city», the HEPL is part of the Bologna Process with the desire to go beyond borders and look to Europe and the world. It has thus long-established varied contacts with other European universities, but also with institutions in South America, Africa and Asia, and it has very fruitful student exchanges with them.

Proud of its reputation as a welcoming institution, accessible to all, our institution is now fully integrated into the new European Higher Education Area.

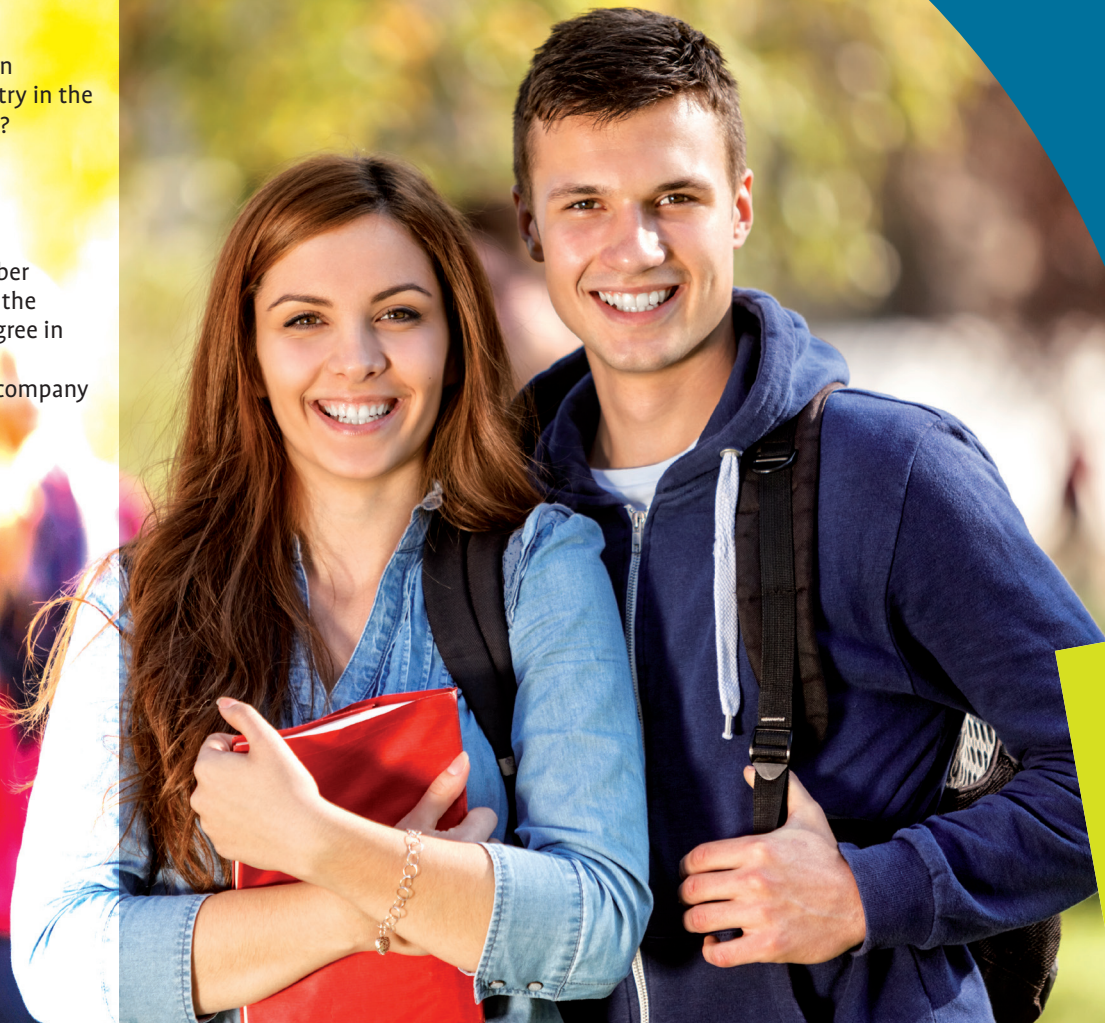
Head of Institution

ONE FULL YEAR IN ENGLISH

How about a full year in English in Industrial Engineering in Chemistry in the French speaking part of Belgium ?

Our offers:

- one welcome-week ;
- one semestrer (from September to mid-January) in English in the second year of a Master's degree in Chemistry ;
- one traineeship in a belgian company or a foreign country.



Our courses :

	Courses	Hours	Ects*
Unit 1	Environmental managing	45	3
Unit 2	Management	45	3
Unit 3	Corporate technical	90	6
Unit 4	Quality assurance	30	2
Unit 5	Chemistry engineering	75	6
Unit 6	Nuclear physics	30	2
Unit 7	Project (integrated practicals)	90	8
TOTAL		405	30

** European Credits Transfer System (European standard that favours the exchange and pursuit of studies in Europe)*

UNIT 1

Environmental managing

How to ?

- include environmental consideration in one's work;
- take care of environmental norms (REACH, Seveso...).

SEMESTER IN ENGLISH

UNIT 2

Management

How to ?

- manage human resources ;
- manage payroll ;
- manage the lead of a real company.

UNIT 3

Corporate technical

How to ?

- image, develop and defend a real project ;
- create a start-up.

UNIT 4

Quality assurance

How to ?

- work as a quality insurer;
- manage quality assurance.





UNIT 5

Chemistry engineering

How to ?

- take care of unitary operation (extraction, filtration, centrifugation, distillation...).

UNIT 6

Nuclear physics

How to ?

- work in industrial application of nuclear energy;
- work in Industrial application of nuclear medicine.

UNIT 7

Project (integrated practicals)

How to ?

- design, develop and conclude an innovative industrial project.

CONTACTS FOR ONE FULL YEAR IN ENGLISH

UNIVERSITY COLLEGE OF THE PROVINCE OF LIÈGE - HEPL

Head Office / Erasmus House
Quai des Carmes, 45
4101 Jemeppe – Belgium

Website: <http://www.hepl.be>

CENTRAL INTERNATIONAL RELATIONS OFFICE

Quai des Carmes, 45
4101 Jemeppe - Belgium

Morgane LAMOUREUX

Relationship and Strategic Head of International Office
morgane.lamoureux@hepl.be
+32 (0)4 279 55 74

Pauline BACQUELAINE

Administrative and Economic Head of International Office
pauline.bacquelaine@hepl.be
+32 (0)4 279 55 76

This semester takes place
at the « Quai Gloesener » building,
located in quai Gloesener, 6
4020 Liège.

**International relations manager
for the department of sciences
and techniques :**

Thibaut LAMOUREUX

thibaut.lamoureux@hepl.be
+32 (0) 4 279 63 71





THE PROVINCE OF LIÈGE



Castle of Harzé



Laetare of Stavelot



Palace of the Prince-Bishops of Liège



Liège Airport



Naimette-Xhovémont Sports Complex

Land of industrialization and innovation, thousand-year-old Principality, the Province of Liège is a surprisingly contrasted land...

YOU CAN ENJOY :

- its geographical location in the heart of a highly developed transportation network ;
- its preserved natural sites ;
- its monuments and castles dating back from various periods in a long history ;
- its cultural heritage ;
- its numerous sports facilities ;
- its towns, historical and shopping centres and walking routes ;
- its art of living, good food and traditions.

Since the curricula offered by the HEI are organized all over the Province of Liège, you will have the opportunity to discover the various treasures of the region.

The Province of Liège is glad to welcome you and to show you how it has become a « land of encounters ».

OUR INSTITUTION IN A FEW WORDS

THE HEPL UNIVERSITY COLLEGE OF THE PROVINCE OF LIÈGE IS PROUD TO HAVE :

- curricula oriented towards working life
(7 Master Degrees, 34 Bachelor Degrees, 15 Specializations and 23 Continuing Education Trainings);
- more than 9,500 students, among whom almost 12% come from abroad;
- more than 700 employees (teaching, administrative and technical staff);
- more than 400 experts;
- 10 sites located all over the Province of Liège;
- many graduates who have benefited from an exchange programme and a stay abroad (Erasmus+);
- around 170 foreign partner institutions (located in Europe and around the world);
- 7 libraries and documentation centres.
- 1 sports complex (outdoor facilities) and 1 sports hall (indoor sports fields)
- 1 Erasmus house

MASTER AND BACHELOR DEGREES

in the following fields :

AGRONOMY - ENVIRONMENT

CHEMISTRY - BIOTECHNOLOGY

CONSTRUCTION - ENERGY

EDUCATION - PSYCHOLOGY

ELECTROMECHANICS - PRODUCTION MANAGEMENT

ECONOMIC MANAGEMENT - LAW

INFORMATION - COMMUNICATION

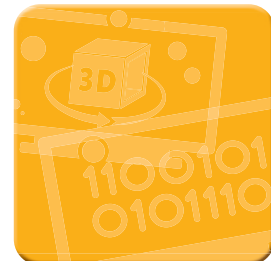
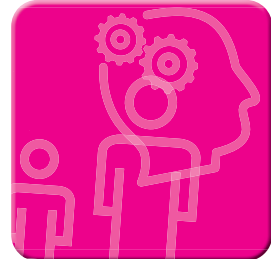
ENGINEERING

MOTRICITY

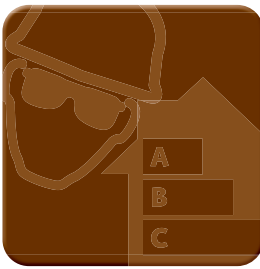
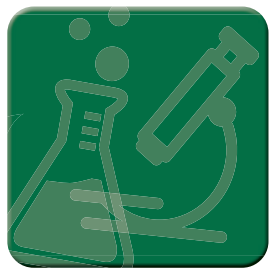
DIGITAL TECHNOLOGY - COMPUTER SCIENCE

HEALTH

SOCIAL DEPARTEMENT



**SPECIALIZATIONS and CONTINUOUS EDUCATION
TRAININGS** in the following fields :



**AGRONOMY - ENVIRONMENT
COMMUNICATION
CONSTRUCTION
COMPUTING - ELECTRONICS
ECONOMIC MANAGEMENT - LAW
EDUCATION
ELECTROMECHANICS - MECHANICS
PARAMEDICAL
SOCIAL**

TRAININGS and SPECIALIZATIONS *(Bachelor, Master, Specialization)*

BACHELOR

- ACCOUNTING
- AGRONOMY
- ALTERNATIVE AND RENEWABLE ENERGY
- ASSISTANT IN PSYCHOLOGY
- BUILDING
- BUSINESS INFORMATICS
- CHEMISTRY - BIOCHEMISTRY/BIOTECHNOLOGY
- COMMUNICATION
- COMPUTING AND SYSTEMS - INDUSTRIAL COMPUTING
- COMPUTING AND SYSTEMS - NETWORKS AND TELECOMMUNICATIONS
- DENTAL HYGIENIST
- DIETETICS
- E-BUSINESS
- ELECTRO-MECHANICS - MECHANICS
- GRAPHIC TECHNIQUES - COMPUTER GRAPHICS
- HUMAN RESOURCE MANAGEMENT
- INTERNATIONAL COOPERATION
- INTERNATIONAL BUSINESS
- LAW
- LIBRARIAN – DOCUMENTALIST

- LOGISTICS MANAGEMENT
- LOWER SECONDARY EDUCATION TEACHER TRAINING DEGREE : PHYSICAL EDUCATION
- MARKETING
- MEDICAL IMAGING TECHNOLOGY
- MEDICAL LABORATORY TECHNOLOGIST
- MIDWIFE
- MULTIMEDIA WRITING
- NURSES RESPONSIBLE FOR GENERAL CARE
- OCCUPATIONAL THERAPY
- ORTHOPTICS
- PSYCHOMOTILITY
- SOCIAL WORKER
- SPEECH THERAPY
- SPORTS COACHING
- YOUTH WORKER SPECIALISED IN PSYCHO-EDUCATIONAL COUNSELLING

MASTER

- CONFLICTS PREVENTION AND MANAGEMENT ENGINEERING
- FACILITY MANAGEMENT
- INDUSTRIAL ENGINEERING

- IT SYSTEMS ARCHITECTURE
- PHYSIOTHERAPY
- PRODUCTION MANAGEMENT
- PUBLIC MANAGEMENT
- SOCIAL ENGINEERING AND ACTION

SPECIALISED BACHELOR

- COMMUNITY HEALTH
- EDUCATION AND REHABILITATION OF THE SENSORY IMPAIRED
- GERIATRICS AND PSYCHO-GERIATRICS
- INTENSIVE CARE AND EMERGENCY MEDICAL AID
- MEDIATION
- MENTAL HEALTH AND PSYCHIATRY
- ONCOLOGY
- PAEDIATRICS AND NEONATOLOGY
- PERIOPERATIVE CARE
- PHYSICAL PREPARATION AND TRAINING
- PSYCHOMOTILITY
- RADIOTHERAPY
- RETAIL MANAGEMENT
- SPORTS NUTRITION



FACILITIES

The HEPL University College offers a successful integration to students from foreign partner institutions. Not only do they enjoy all services provided to our students (in terms of accommodation, catering, ...) but they also benefit from personalized services like an intensive training in French for foreigners.

The HEPL always welcomes with great pleasure teachers from foreign partner institutions. Whether organized in the frame of a tutorial or integrated in lecture cycles, all the themes tackled show the expertise of the guest speakers and are an invaluable asset to our students.

ERASMUS+

Argentina - Belgium - Brazil - Bulgaria - Canada - Chile - China - Croatia - Cyprus - Czech Republic - Denmark - Finland - France - Germany - Greece - Hungary - India - Indonesia - Italy - Japan - Lithuania - Macedonia - Malaysia - Mexico - Morocco - Netherlands - Norway - Peru - Poland - Portugal - Romania - Russia - Singapore - Slovakia - Slovenia - Spain - Sweden - Switzerland - Taiwan - Turkey - Uzbekistan - Ukraine

EXAMPLES OF TUTORIALS GIVEN ABROAD BY TEACHERS FROM THE HEPL UNIVERSITY COLLEGE

- Cross cultural marketing
- Process control : direct design of digital controllers
- Biological purification of urban waters
- Use of new genetic engineering techniques in the agroalimentary analysis methods
- Heritage Management Administration in Belgium - Study of building pathologies and real cases
- Primary nurse care - Support to humanitarian projects
- Historical development and contemporary architecture of microprocessors and micro controllers



ERAMUS HOUSE

The HEPL has a building (renovated in 2017) comprised of 35 rooms (including one equipped for a Person with Reduced Mobility) to accommodate Erasmus students. A supervisor is present, on the spot, during the day.

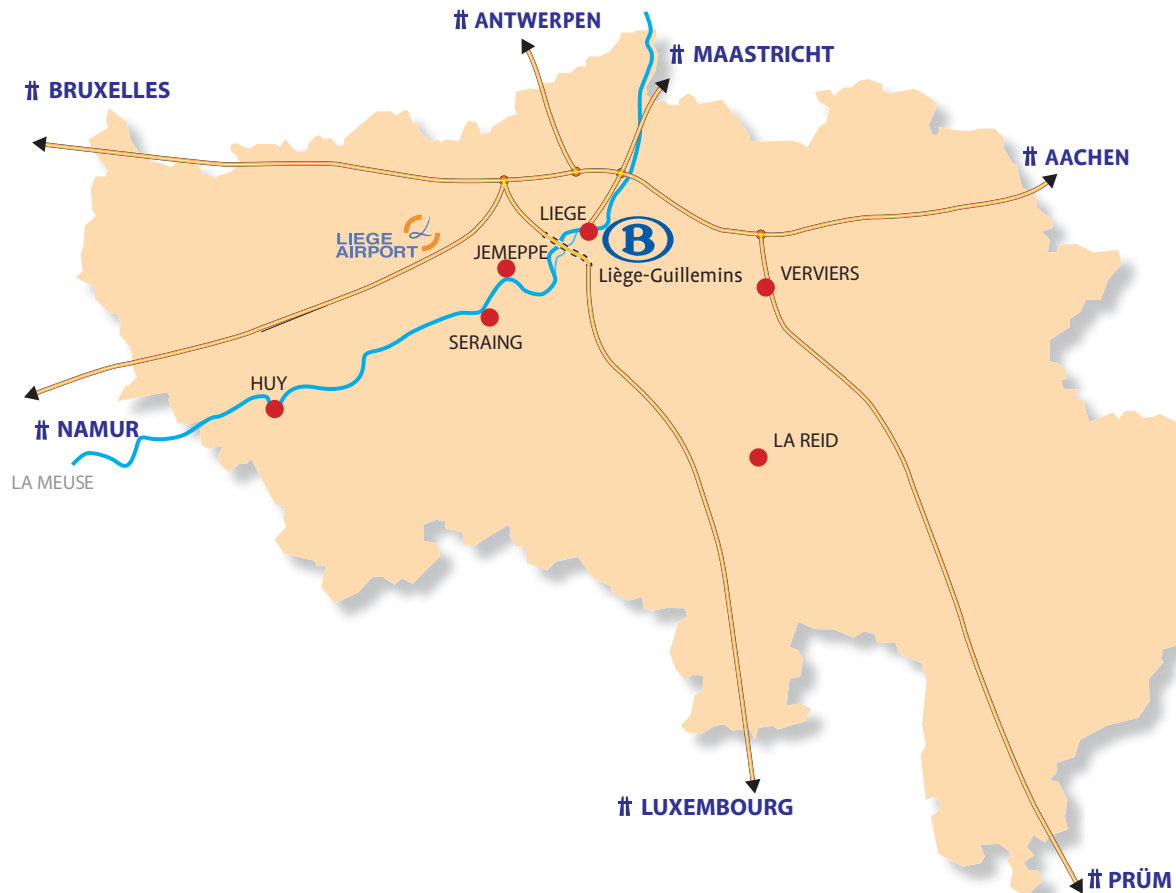
A STUDENT'S VIEW

I would certainly recommend the University College of the Province of Liège to other international students : tutorials are oriented towards working life and I like it. Moreover, Liège has a central location in Europe, which enables students to travel a lot and meet other cultures.

Antonio Filipe Alves Pinto

Erasmus student in Communication (Portugal)

MAP



CONTACTS

HEPL - UNIVERSITY COLLEGE OF THE PROVINCE OF LIÈGE

Head of Institution
Annick LAPIERRE

Head Office :
Quai des Carmes, 45
4101 JEMEPPE (Seraing)
BELGIUM

Tel. : +32 (0)4 279 54 99

E-mail : hepl@provincedeliege.be

Website : www.hepl.be



HEPL - UNIVERSITY COLLEGE OF THE PROVINCE OF LIÈGE

Head Office :

Quai des Carmes, 45 - 4101 JEMEPPE (Seraing) - BELGIUM

